

# Getting started with Accu-Chek® Smart Pix

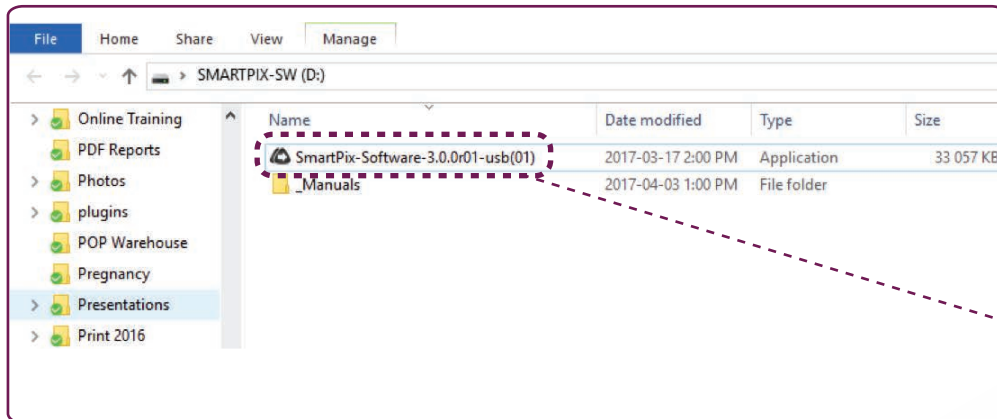


Accu-Chek® Smart Pix offers you a quick & easy way to identify trends and patterns for self-management & therapy optimisation in conjunction with your Healthcare Professional.

Download the Accu-Chek® Smart Pix software at [www.accu-chek.co.za](http://www.accu-chek.co.za)

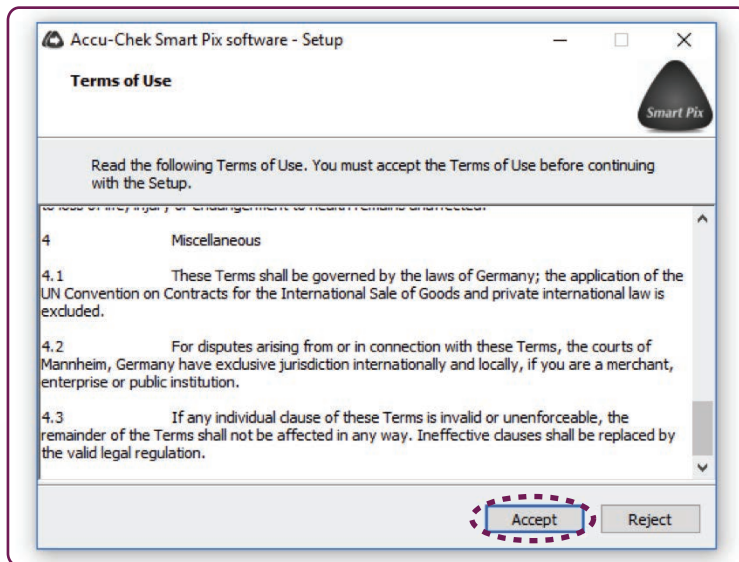
Follow these simple steps:

## STEP 1: Go to [www.accu-chek.co.za/data-management/smart-pix-diabetes-management-system](http://www.accu-chek.co.za/data-management/smart-pix-diabetes-management-system)

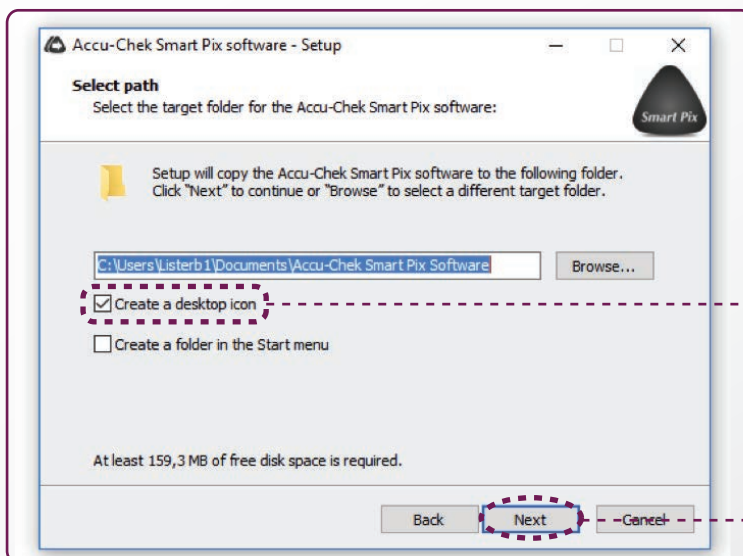


1.1. Double click on the black triangle with arrow.  
1.2. Select "English" for setup

## STEP 2: Click on "accept" to agree to the terms of use

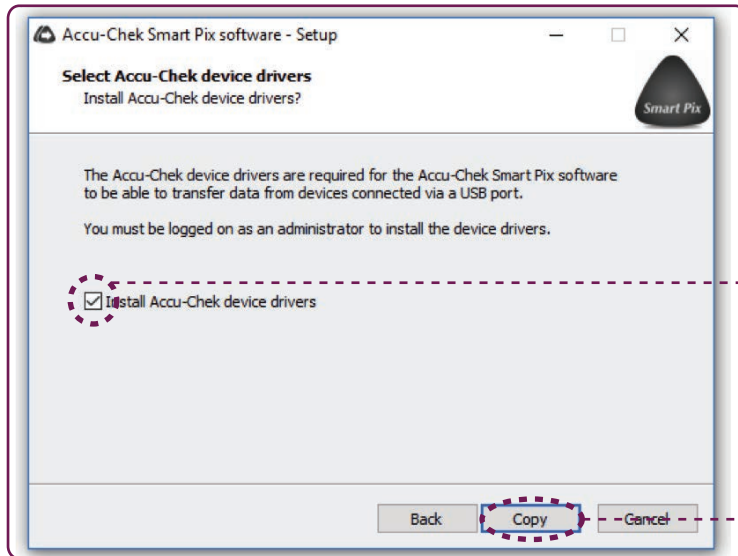


## STEP 3: When the below screen pops up ensure that the option to "Create a desktop icon" is ticked (circled below) and then click "next"

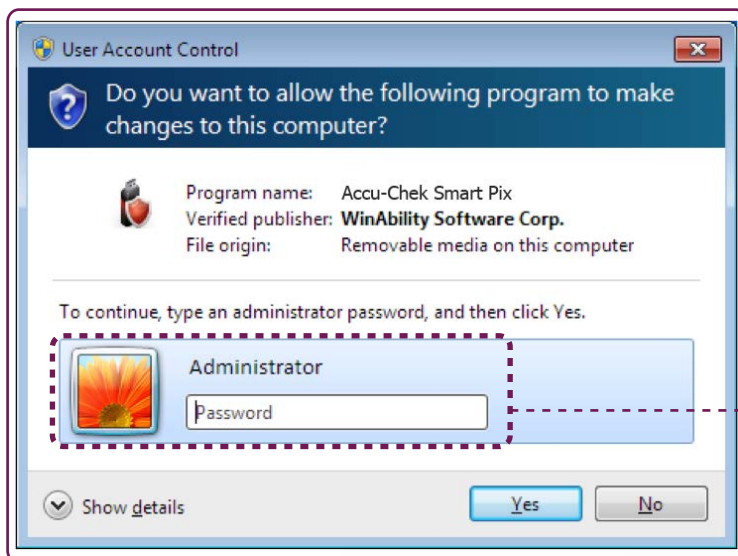


3.1. Ensure desktop icon is ticked  
3.2. Click "Next"

## STEP 4: Install Accu-Chek device drivers

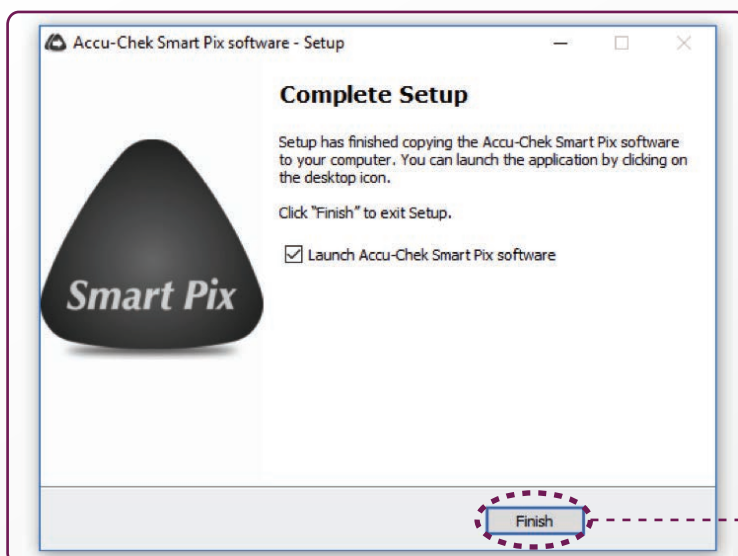


4.1. Ensure "Install Accu-Chek device drivers" is ticked  
4.2. Click "Copy"



If admin rights are requested, Please enter your password.

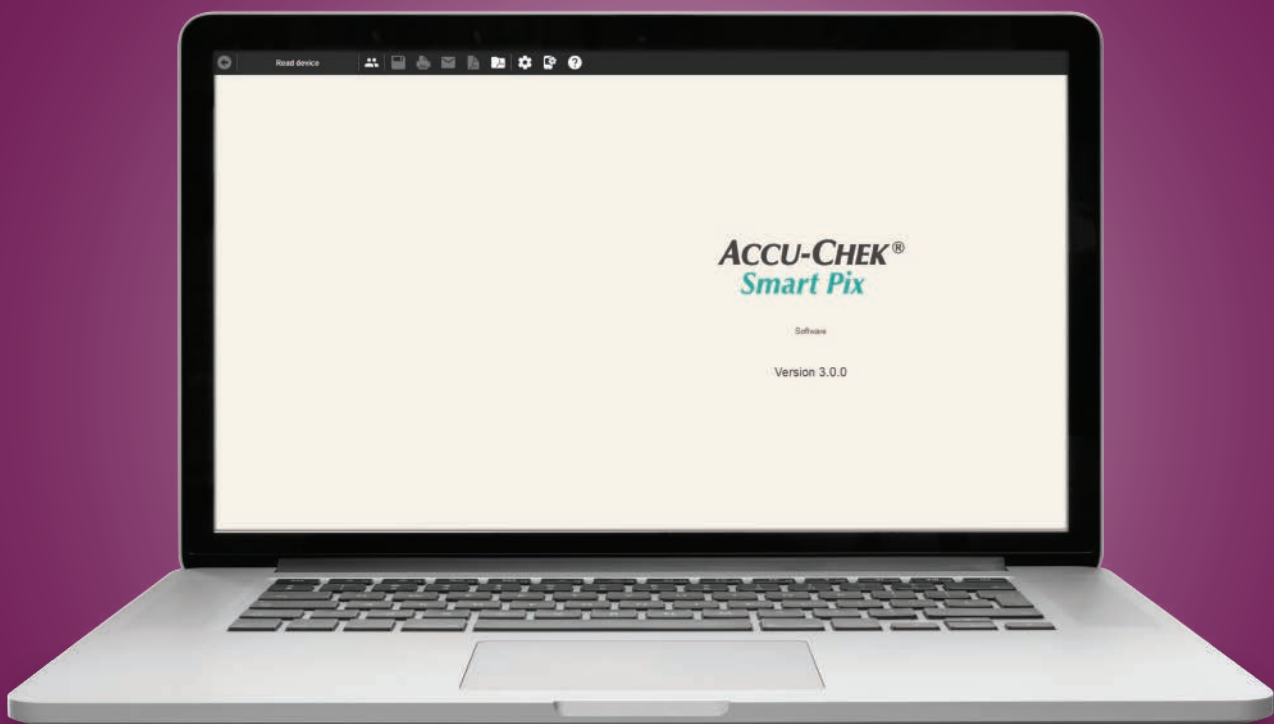
## STEP 5: Install Accu-Chek device drivers



7.1. Click on "Finish" to complete setup (Ensure "Launch Accu-Chek Smart Pix software" is ticked)



# Your **Accu-Chek<sup>®</sup> Smart Pix** is now ready to be used



## Need support?

Contact the Accu-Chek<sup>®</sup> Call Centre on **080-34-22-38-37** or email **info@accu-chek.co.za** for further assistance.

Call Toll Free: 080-34-22-38-37 (South Africa only)  
+254-20-764-0560 (Kenya only);  
+27 (11) 504 4677 (Other countries).  
Nigeria Customer Care: + 234-1227-8889  
AccuChekSubSahara  
Visit the Accu-Chek website at: [www.accu-chek.co.za](http://www.accu-chek.co.za)

Roche Diabetes Care South Africa (Pty) Ltd, Hertford Office Park, Building E, 90 Bekker Road, Midrand, 1686  
ACCU-CHEK and ACCU-CHEK SMART PIX are trademarks of Roche.

©2019 Roche Diabetes Care.

